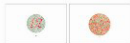


## 9. Fixation video



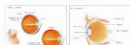
In the Acuty XL it is possible to have a short video clip for the children, in the Acuty Baby it is not possible

## 10. Color vision Testing



24 slides of color vision testing is possible on the both the Acuty.

## 11. Education Slides



Both Acuty have the possibility to present the Education slides for various eye Disorders.

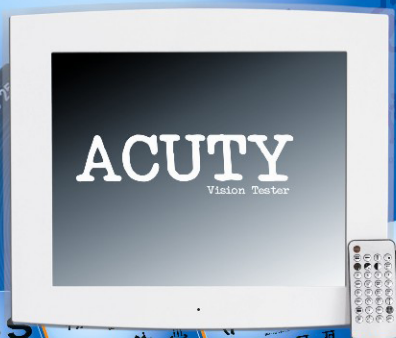
## Technical Specifications of the Acuty Digital Vision Tester

	Acuty XL	Acuty Baby
Screen Size	17" High Res Sharp LCD	12.5" High Res Sharp LCD
Distance program	2.5m, 3.0m, 3.5m and 4.0 m	2.5 m OR 3.0 m
Projection	Direct, No mirror required	Direct, No Mirror Required
Language Presentation	8 ( Snellen, Landolt C, E, Numbers, Log mar, Allen Pre-school, Regional Hindi, HOTV	8 ( Snellen, Landolt C, E, Numbers, Log Mar, Allen Preschool, Regional)
Isolation of letters ( Horizontal, Vertical and Single)	Possible for ALL 8 languages above	Possible only for Snellen, Landolt C, E and Numbers.
Random chart presentation	Possible	Not Possible
Color Vision	24 plate Ishihara Type	24 plate Ishihara Type
Contrast Sensitivity	Possible from 6/24 to 6/6 in all 8 languages above, gradings from 70% to 6.25%	Possible only in English Snellen from 6.25% to 70%.
Low Vision Testing	Reverse presentation ( White on black ) for all 8 languages, vision testing from 1/60	Not possible
Astigmatic Fan	10° testing of axis possible	General Fan
Stereo Acuty Testing	Possible	Not possible
Fixation video	Possible	Not possible
Amsler Grid	Possible	Possible
Binocular Vision tests	Maddox, Schober and Binocular Balance and worth 4 Dot	Worth 4 dot only
Duochrome test	Possible on all optotype	Only 1 possible
Education slides	Possible	Possible
USB Key drive for picture presentation	Possible	Possible



The Acuty Baby is a high-tech vision tester, with unique features

BY VISION ON TECHNOLOGY  
**Jaggi**



- Stand alone design
- High technology inside
- High Resolution Sharp LCD 17"
- Continuous Upgrades available
- Space saving
- Fits into every modern practice.
- Fan less Anti-Noise System
- Wall mounting and portable
- Random chart presentation
- Low vision testing
- Children Animation fixation video
- Speed buttons for direct 6/6, 6/12 line access
- Astigmatic fan testing @ 10° intervals



Acuity is a LCD based Visual Acuity Testing Chart, designed to cater to the needs of the modern Eye Care Practitioner. The Acuity is available in two models presently.

Acuity Baby - 12.5" Fully functional LCD vision Tester

Acuity XL - 17" Advanced LCD vision Tester.

Both the models are wall mountable and require minimal office space. They are stand alone devices with in-built processor and display system, just plug the unit in the mains and its ready to go!

In all 8 various optotype formats can be presented in the 6/6, 20/20 and decimal acuity formats. In addition logmar acuity is available to be recorded.

While the Acuity XL is programmable for a direct presentation distance between 2.5m and 4 km, the Acuity Baby is a fixed distance presenter with either a 2.5m or a 3.0m direct presentation option.

Isolation of charts in groups, single line or in Single letters is possible in both models. In addition, the Acuity XL is capable of randomization of the charts in all eight languages.

In addition to this, both the Acuity - digital vision testers have a very unique feature - to be able to present Powers through a USB pen drive. Thus, your visual chart presentation device doubles up as a presentation screen as well.

Binocular vision tests like the Maddox rod can be performed on both the Acuity models, however the advanced binocular vision tests like Dissociated binocular vision test, Schobor tests and the gross stereo acuity tests can be performed only on the Acuity XL.

Pediatric vision testing forms a very crucial aspect of any Ophthalmic examination, both the Acuity screens are equipped with Allen Pre-School acuity charts for quick and easy assessment of vision in children. For accurate amblyopic vision assessment, both the Acuity comes with Single Letter isolation. The Acuity XL has a special video clip especially for children, to assist in a maintained fixation.

Fully functional remote control is available in both the Acuity. The range of operation is close to 4.5 m and it uses regular AA batteries for an enhanced life. The remote control is conveniently sized for easy operation.

## Types of Pictures

### 1. Group presentation of Optotypes



8 Different languages are possible on both types of Acuity.

### 2. Single Line Presentation of Optotypes



It is possible to present Single lines for all 8 Languages (only first 4 in Acuity Baby) from the 6/36 line till the 6/3 line.

### 3. Vertical Line presentation of Optotypes



It is possible to isolate vertically the line for all 8 languages (first 4 languages only in Acuity baby) from 6/24 line to 6/6 line.

### 4. Single Letter presentation of Optotypes.



It is possible to isolate single letters for all 8 Languages (first 4 languages only in Acuity baby) from 6/18 line to 6/6 line.

### 5. Low Vision Testing



It is possible to Reverse test for Low Vision patients or patients with Macular Degeneration. It is possible to test from 1/60 acuity down to 6/18 in all 8 languages on the Acuity XL. This function is not possible on Acuity Baby.

### 6. Contrast Sensitivity Testing



It is possible to check for the contrast sensitivity for all 8 languages in the Acuity XL. The Contrast sensitivity can be checked from 6/24 line to 6/6 line. The Acuity Baby has the check for only one language i.e. English from 70% to 6.25%.

### 7. Binocular Vision Assessment



It is possible to test for the gross Stereo vision (using Red Green Glasses). While the worth 4 dot and the Maddox tests are possible in both the Acuity models, the Gross 3 D test is exclusive only to the Acuity XL.

### 8. Astigmatic Verification Axis



It is possible to verify the axis of astigmatism in every 10° step in the Acuity XL. Only the regular chart is presented in the Acuity Baby.